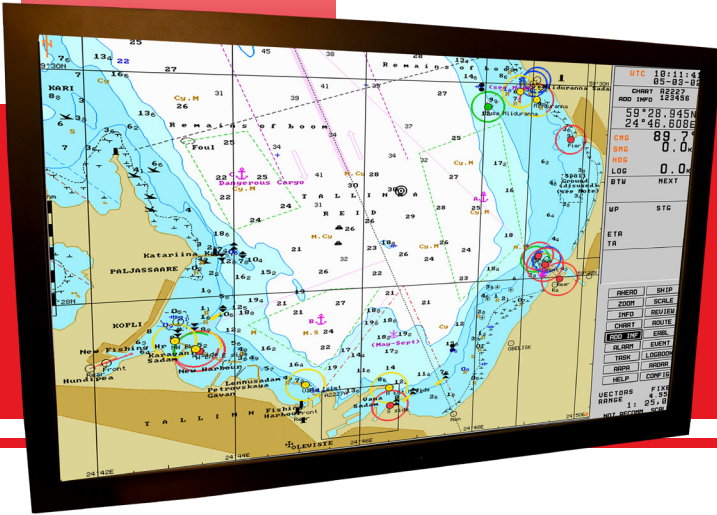


AYDINDISPLAYS

a sparton company

WWW.SPARTONRE.COM | SALES@SPARTONRE.COM



4465

65" AMLCD LARGE FORMAT MILITARY DISPLAY

FEATURES:

- Convenient Front Controls/IR Remote Operation/RS-232 Remote
- High Bright with Dimming
- Anti-Reflective Protective Viewing Window
- Wide Viewing Angle in All Directions
- HD-15 (VGA) and DVI-D Input Video Connector
- High Resolution 1920×1080

Aydin is:



5/18_Rev 1



1 Riga Lane,
Birdsboro, PA
19508, U.S.A.,
1-866-367-2934

SPECIFICATIONS:

Active Display Area:	1428 x 803 mm (56.2" x 31.6")
Pixel Pitch:	0.744 (H) x 0.744 (V) mm
Brightness:	360 cd/m ² (Typical) w/ EMI faceplate
Viewing Angle:	±85° All Directions (Typical)
Contrast Ratio:	2500:1 (Typical)
Response Time:	8 ms (Typical/GTG)
Power Requirements:	90-264 VAC Auto Ranging, 47-63 Hz 527watts (Typical)
Display Colors:	6.7Million
Input Interface:	HD-15 (VGA), DVI-D
Native Resolution:	1920 x 1080 @ 60 Hz
Resolutions Supported:	640 x 480 @ 60-85 Hz 800 x 600 @ 56-85 Hz 1024 x 768 @ 60-85 Hz 1152 x 900 @ 66 Hz 1280 x 1024 @ 60-75 Hz 1600 x 1200 @ 60 Hz
Display Controls:	Power, Brightness, Contrast, Clock, Horizontal Phase, Horizontal & Vertical Position
Temperature:	Operating: 0° to 50° , MIL-STD-810F Method 501/502, Procedure II Storage: -20° to 60° , MIL-STD-810F Method 501/502, Procedure I

Humidity:	Operating/Storage: 5 to 95% RH Non-condensing MIL-STD-810F Method 507, Procedure I
Altitude:	Operating: 0 to 10,000 ft. above sea level Storage: 0 to 40,000 ft. above sea level MIL-STD-810F, Method 500
Shock:	MIL-STD-901D, Grade B Class I Type A
Vibration:	MIL-STD-167-1A Type 1
EMI:	MIL-STD-461E CE 102, CS 101, CS 114 CS 116, RE102, RS101, RS103
Power:	Chassis Connector: IEC 320
Power Connections:	Cable Connector: NEMA 5-15 P
Other Features:	IR Handheld Remote Operation RS-232 Remote Control Picture-in-Picture (PIP) Picture and Picture (PAP)
Dimensions:	61"W x 37"H x 7.2" DP
Weight:	168 lbs