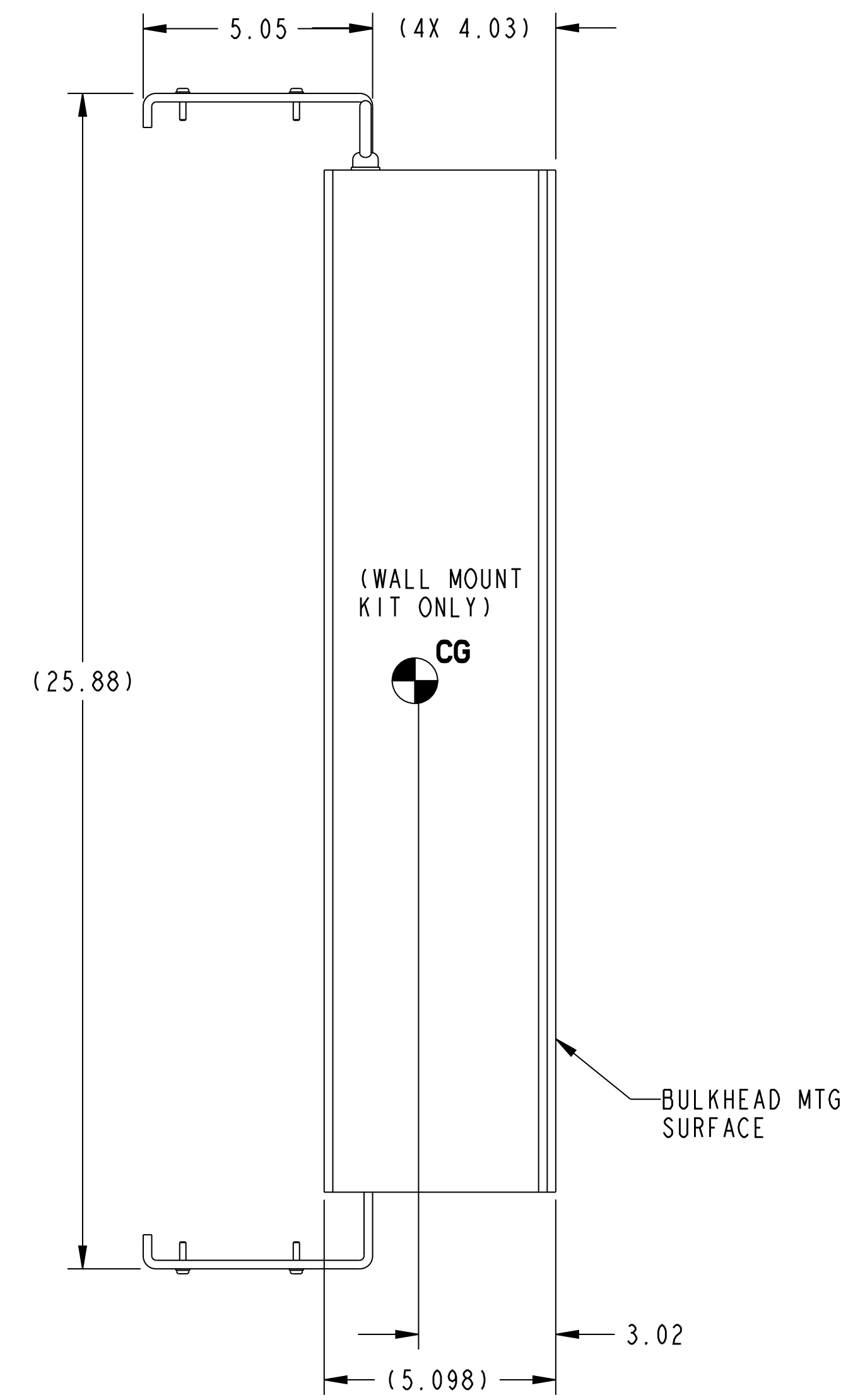
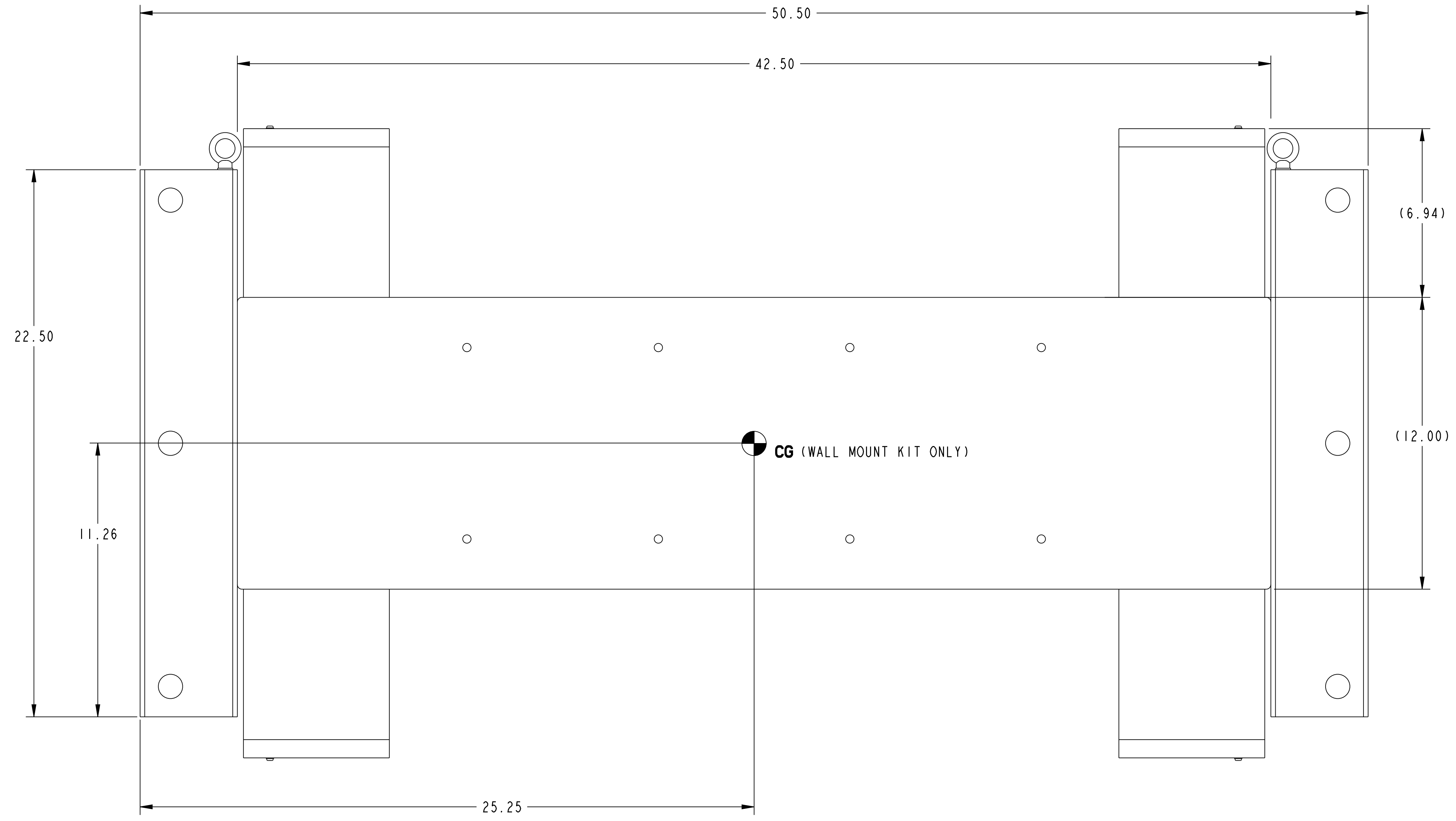


NOTICE TO PERSONS RECEIVING THIS DOCUMENT: THIS DOCUMENT IS THE EXCLUSIVE PROPERTY OF AYDIN DISPLAYS, INC. IT CONTAINS PROPRIETARY AND CONFIDENTIAL INFORMATION OF THE COMPANY, AND IS DELIVERED ON THE EXPRESS CONDITION THAT IT IS NOT TO BE DISCLOSED OR REPRODUCED IN WHOLE OR IN PART, NOR USED FOR MANUFACTURE BY ANYONE OTHER THAN THE AYDIN DISPLAYS, INC.; AND THAT NO RIGHT IS GRANTED TO DISCLOSE OR SO USE ANY INFORMATION CONTAINED IN THIS DOCUMENT

REVISION		DATE	APPROVED
0	ENG RLSD - CUST RVW	04/06/10	EP
1	SHT2, ZN B5: ... P/N 4442-A2-551-11L WAS ... P/N 4442-A1-551-11L. NOTES 1 & 6: #8-32 SCREWS WERE #6-32 SCREWS. JK 7/23/10	—	EP
2	SHT 2, ZN C8: WEIGHT WAS 90 LBS JK 9/23/10	—	EP



FRONT VIEW

SEE SEPARATE PARTS LIST PL 354-7053-502

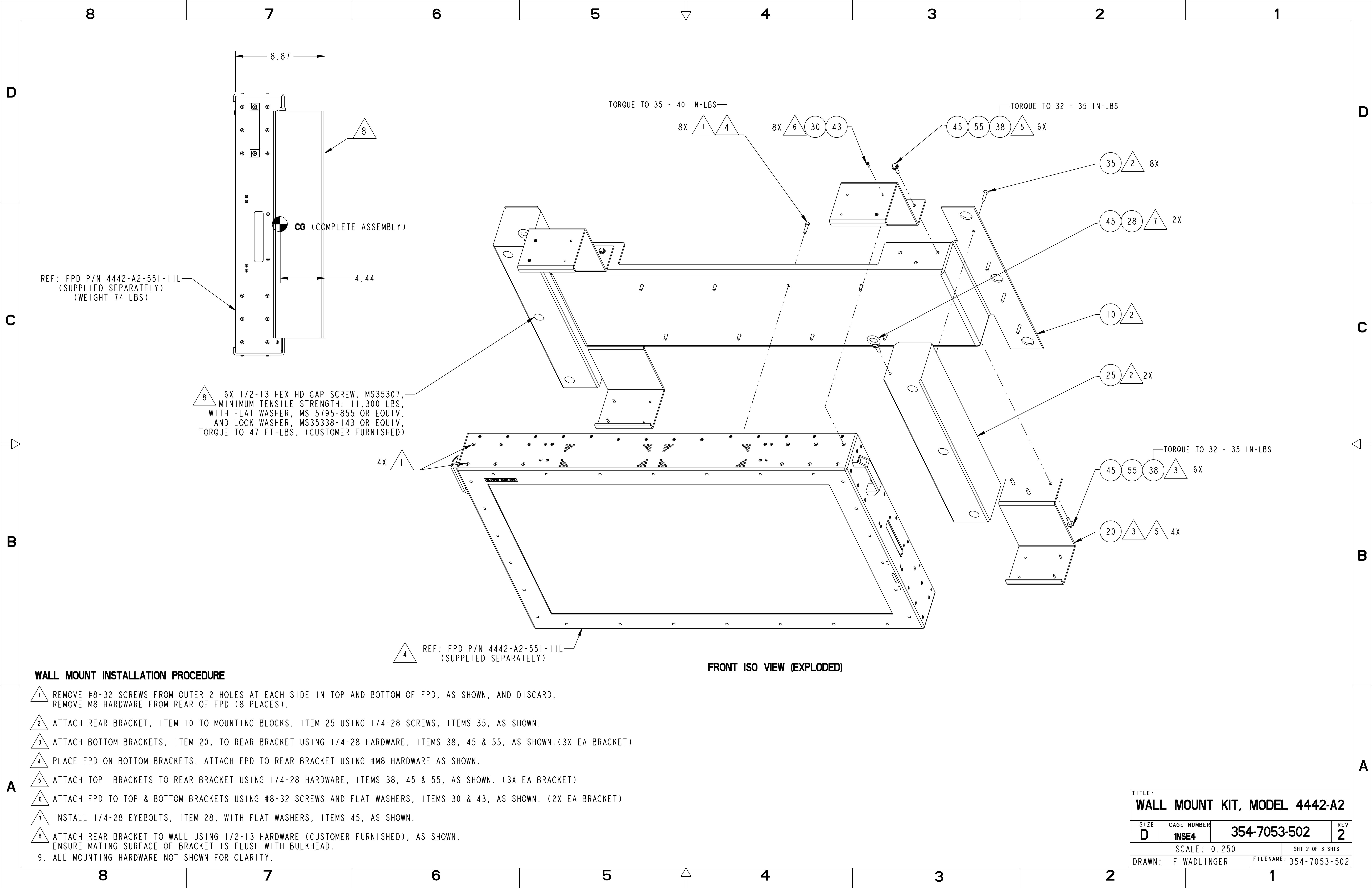
NOTES:
1. WEIGHT = 150 LBS (WALL MOUNT KIT ONLY).

CAD DATA MANAGEMENT		
354-7053-502	ASM	
354-7053-502	DRW	
354-7053-502_REV.2	PDF	

DRAWN F. WADLINGER 05-APR-10	AYDIN DISPLAYS INC		
CHECKED E. PELLICCIOTTI	TITLE: WALL MOUNT KIT, MODEL 4442-A2		
DRAFTING NA	SIZE D	CAGE NUMBER 1NSE4	DRAWING NUMBER 354-7053-502
ENGINEER E. PELLICCIOTTI	SCALE 0.375	REV 2	SHT 1 OF 3 SHTS
APPROVED MFG NA	FILENAME 354-7053-502		
APPROVED QA NA	TOLERANCE ON DIMENSIONS ARE IN INCHES		

UNLESS OTHERWISE SPECIFIED DIMENSIONS ARE IN INCHES	TOLERANCE ON	FRACTIONS	DECIMALS	ANGLES
		±1/64	.XX=.02 .XXX=.010	±1/2°
AYDIN WORKMANSHIP STANDARDS ARE AN INTEGRAL PART OF THIS DRAWING (285-8057)	NEXT ASSY	USED ON	APPLICATION	

PRO-E GENERATED



REF: FPD P/N 4442-A2-551-11L
(SUPPLIED SEPARATELY)
(WEIGHT 74 LBS)

8 6X 1/2-13 HEX HD CAP SCREW, MS35307,
MINIMUM TENSILE STRENGTH: 11,300 LBS,
WITH FLAT WASHER, MS15795-855 OR EQUIV.
AND LOCK WASHER, MS35338-143 OR EQUIV,
TORQUE TO 47 FT-LBS. (CUSTOMER FURNISHED)

4 REF: FPD P/N 4442-A2-551-11L
(SUPPLIED SEPARATELY)

TORQUE TO 35 - 40 IN-LBS

TORQUE TO 32 - 35 IN-LBS

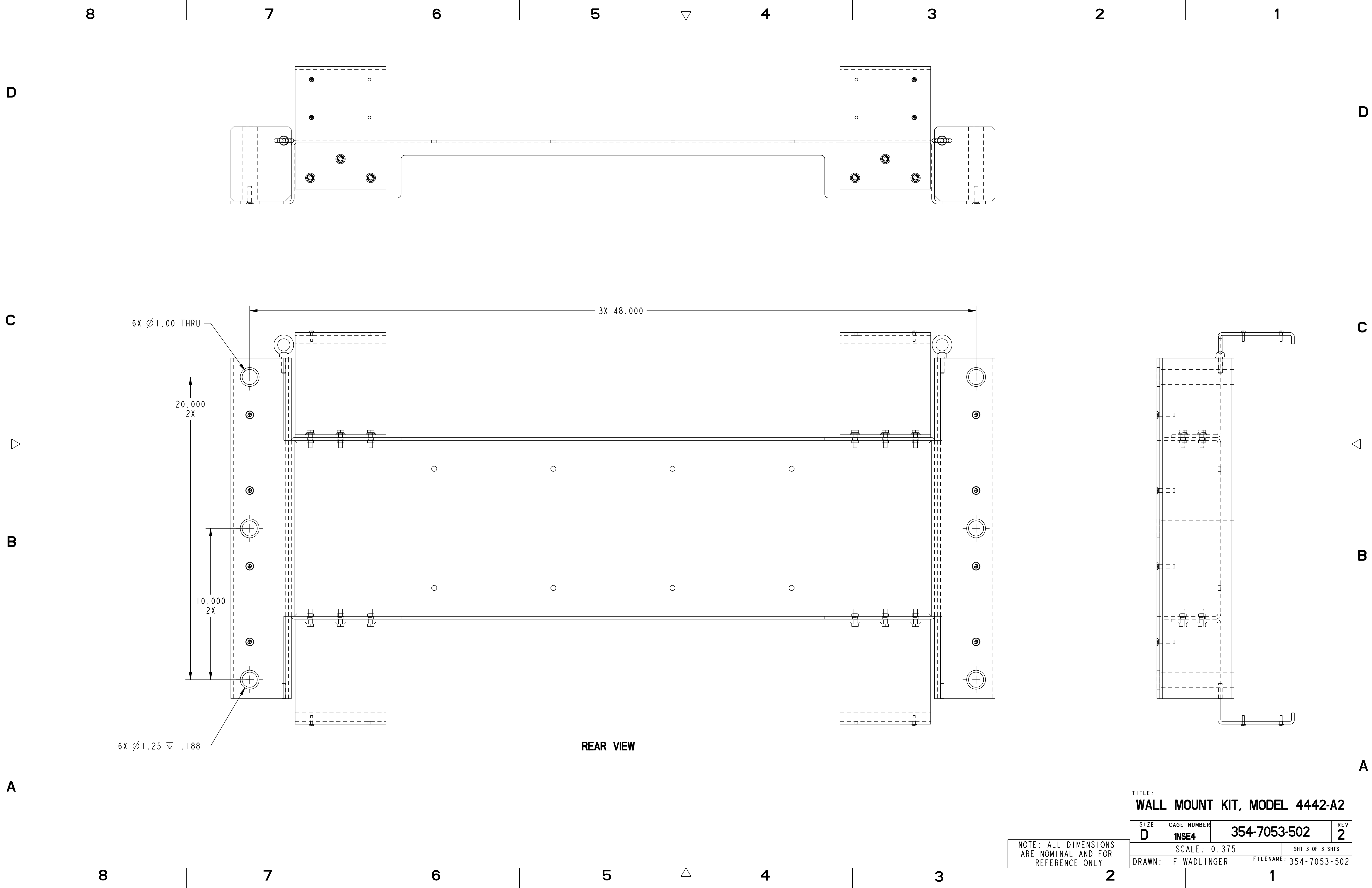
TORQUE TO 32 - 35 IN-LBS

FRONT ISO VIEW (EXPLODED)

WALL MOUNT INSTALLATION PROCEDURE

- 1 REMOVE #8-32 SCREWS FROM OUTER 2 HOLES AT EACH SIDE IN TOP AND BOTTOM OF FPD, AS SHOWN, AND DISCARD. REMOVE M8 HARDWARE FROM REAR OF FPD (8 PLACES).
- 2 ATTACH REAR BRACKET, ITEM 10 TO MOUNTING BLOCKS, ITEM 25 USING 1/4-28 SCREWS, ITEMS 35, AS SHOWN.
- 3 ATTACH BOTTOM BRACKETS, ITEM 20, TO REAR BRACKET USING 1/4-28 HARDWARE, ITEMS 38, 45 & 55, AS SHOWN. (3X EA BRACKET)
- 4 PLACE FPD ON BOTTOM BRACKETS. ATTACH FPD TO REAR BRACKET USING #M8 HARDWARE AS SHOWN.
- 5 ATTACH TOP BRACKETS TO REAR BRACKET USING 1/4-28 HARDWARE, ITEMS 38, 45 & 55, AS SHOWN. (3X EA BRACKET)
- 6 ATTACH FPD TO TOP & BOTTOM BRACKETS USING #8-32 SCREWS AND FLAT WASHERS, ITEMS 30 & 43, AS SHOWN. (2X EA BRACKET)
- 7 INSTALL 1/4-28 EYEBOLTS, ITEM 28, WITH FLAT WASHERS, ITEMS 45, AS SHOWN.
- 8 ATTACH REAR BRACKET TO WALL USING 1/2-13 HARDWARE (CUSTOMER FURNISHED), AS SHOWN. ENSURE MATING SURFACE OF BRACKET IS FLUSH WITH BULKHEAD.
9. ALL MOUNTING HARDWARE NOT SHOWN FOR CLARITY.

TITLE: WALL MOUNT KIT, MODEL 4442-A2			
SIZE D	CAGE NUMBER INSE4	354-7053-502	REV 2
SCALE: 0.250		SHT 2 OF 3 SHTS	
DRAWN: F WADLINGER		FILENAME: 354-7053-502	



6X Ø1.00 THRU

20.000
2X

10.000
2X

6X Ø1.25 ∇ .188

3X 48.000

REAR VIEW

TITLE:
WALL MOUNT KIT, MODEL 4442-A2

SIZE D	CAGE NUMBER INSE4	354-7053-502	REV 2
------------------	-----------------------------	---------------------	-----------------

SCALE: 0.375 SHT 3 OF 3 SHTS

DRAWN: F WADLINGER FILENAME: 354-7053-502

NOTE: ALL DIMENSIONS
ARE NOMINAL AND FOR
REFERENCE ONLY