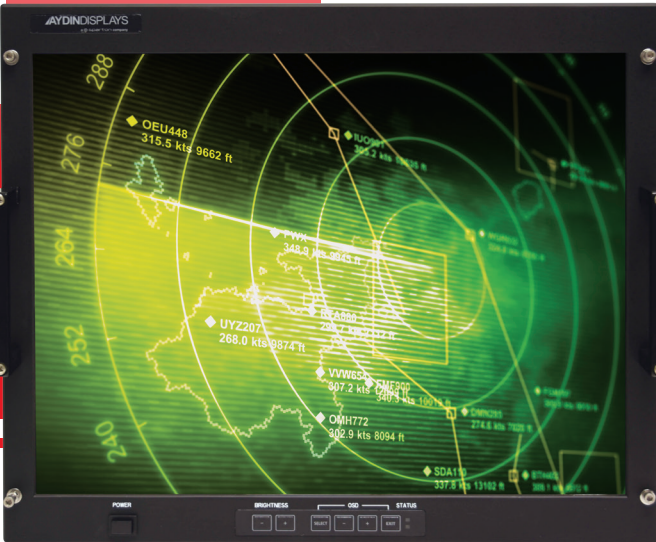


# AYDINDISPLAYS

a sparton company

WWW.SPARTONRE.COM | SALES@SPARTONRE.COM



## 4421R5C

21.3" COLOR FLAT  
PANEL DISPLAY

### FEATURES:

- Convenient Front Controls
- High Brightness with Full Range Dimming
- Anti-reflective Protective Viewing Window
- Wide Viewing Angle

# SPECIFICATIONS:

## Active

**Display Area:** 17.01" x 12.76"

**Pixel Pitch:** 0.27 x 0.27 mm

**Brightness:** 200 cd/m<sup>2</sup> (minimum)  
250 cd/m<sup>2</sup> (typical)

**Viewing Angle:** ±88° All Directions (typical)  
±80° (minimum)

**Contrast Ratio:** 1000:1 (typical) Dark Ambient  
300:1 (minimum)

**Response Time:** 16 ms (typical) TR + TF

**Display Colors:** 16.7 million

**Synchronization Range:** **Horizontal:** 31.5 to 91.1 kHz  
**Vertical:** 56 to 85 Hz

**Input Signal:** **Video Sync:** Analog 0.7 V p-p/75 Ω Separate sync. TTL level  
**Horizontal Sync:** Positive/Negative  
**Vertical Sync:** Positive/Negative  
**Composite Sync:** Positive/Negative Sync on Green (Video 0.7p-p and Sync 0.3Vp-p)

**Input Video Interface:** 5 BNCs, DVI-I

**Video Input Impedance:** 75 Ohms (analog Input)

**Resolutions Supported:** 640 x 480 @ 60-85 Hz  
720 x 400 @ 85 Hz  
800 x 600 @ 56-85 Hz  
1024 x 768 @ 60-85 Hz  
1280 x 1024 @ 60-85 Hz  
1600 x 1200 @ 60 Hz

**Native Resolution:** 1600 x 1200 @ 60 Hz

**User Controls:** Power, Brightness, Contrast, On Screen Display (OSD)

**Humidity:** **Operating/Storage:** 5 to 95% RH Non-condensing MIL-STD-810E, Method 507.3 Procedure I

**Temperature:** **Operating:** 0°C to 50°C, MIL-STD-810E Method 501.3/502.3, Procedure II  
**Storage:** -20°C to +60°C, MIL-STD 810E, Method 501.3/502.3, Procedure I  
**Optional:** -40°C

**Altitude:** **Operating:** 0 to 42,000 ft. above sea level MIL-STD 810E, Method 500.3  
**Storage:** 0 to 54,000 ft. above sea level MIL-STD 810E, Method 500.3

**Rapid Decompression:** RTCA/DO-160D, 8,000 ft ASL to 42,000 ft. ASL in 15 seconds, 42,000 ft. ASL to 25,000 ft. ASL in 5 minutes

**Shock:** MIL-S-901D, Grade A, Class 1 Type A

**Vibration:** MIL-STD-167-1A, Type 1

**Drip:** MIL-STD-810E, Method 506.3 Procedure II, Front Panel only

**Sand/Dust:** MIL-STD-810E, Method 510.3, Front Panel only

**EMI:** MIL-STD-461F, CE101, CE102, CS101, CS106, CS114, CS116, RE101, RE102, RS101, RS103

**Power:** **Supply:** Internal 90- 132/180-264 VAC Auto Ranging  
**Frequency:** 47-440 Hz  
**Power:** 100 Watts (Typical); 120 Watts(Max)  
**Chassis Connector:** MS27466T09B98P  
**Cable Connector:** MS27467T09B98S

**Dimensions:** 19"W x 15.75"H x 1.5"DP

**Weight:** 28 lbs

**Compatibility:** PCs, Workstations & X-Terminals

[WWW.SPARTONRE.COM](http://WWW.SPARTONRE.COM) | [SALES@SPARTONRE.COM](mailto:SALES@SPARTONRE.COM)

Please contact your sales representative for more information.  
Consult Factory on pricing and lead time.